

Dress Code Policy

- Clothes shall be worn as they are designed.
- Clothing must cover the body from one armpit across to the other armpit and down to approximately mid-thigh (see image to the right).
- Tops must have straps.
- Undergarments must not be viewable.
- Rips, holes, or tears in clothing must be below the knee.

Dress Code Cont.

- See-through, revealing, or mesh garments must not be worn without appropriate coverage underneath that meet the minimum requirements of this dress code.
- Clothing must not state, imply, or depict hate speech or imagery targeting groups based on race, ethnicity, gender, sexual orientation, gender identity, religious affiliation, or any other protected class.
- Gang paraphernalia, garments and/or jewelry, tattoos, or other insignias, which display or suggest sexual, vulgar, drug, alcohol, or tobacco-related wording/graphics or may tend to provoke violence or disruption in school shall not be worn.
- Clothing and accessories that endanger students or staff shall not be worn.

Dress Code Policy

If you come to school like this, you will be sent to the Grade Level Office.



Leggings

Over-garments (shirt, shorts, skirts/dresses) must cover front, back and sides and be at mid-thigh.

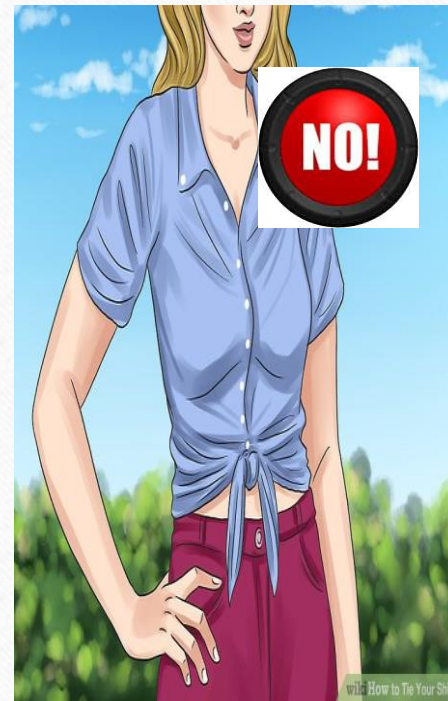


Skirts/Dresses/Shorts

Length MUST be mid-thigh or longer



Knotted shirts/Short shirts (sweaters)



Shirts/Blouses/Tops

- Tops must have straps.
- Clothing must cover the body from one armpit across to the other armpit and down to approximately mid-thigh.

Jeans with holes, torn/frayed

(holes must be below the knee)



Pajama pants and house slippers
are NOT permitted!



Dangerous Clothing and Accessories

- Clothing and accessories that endanger students or staff shall not be worn.



Hats, caps, visors, sunglasses, bandanas, or headbands are not to be worn on campus during the school day.



Footwear

Safe and appropriate footwear must be worn.



1. High heels, no back

2. Bedroom slippers

3. Slides

4. Backless shoes

5. Cleated shoes

